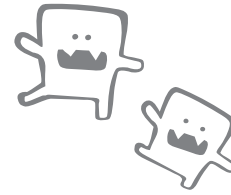




CTP CHALLENGE

Stopping the Spread of HAIs
One Critical Touch Point at a Time



A

Room Number

Apply glow gel to at least 5 of the critical touch points listed. Place a check in the column beside each CTP you marked.

B

After EVS has cleaned the room, use the UVA LED light to check for the presence of glow gel on the CTPs you marked. If no glow gel is present, mark **“cleaned.”** If glow gel is present, mark **“missed.”**

Critical Touch Point	Marked	Cleaned	Missed
Bed frame			
Mattress			
TV remote			
Bedside table			
Telephone			
Light switch			
IV pole			
Trash can			
Chair arm			
Door knob			
Door frame			
Vent			
Mirror			
Sink			
Sink fixtures			
Toilet base			
Toilet fixtures			
Paper towel dispenser			
Toilet paper dispenser			
Shower head			

C

Enter the total number of checks in the **“marked”** column. Then enter the total number of checks in the **“cleaned”** and **“missed”** columns.

D

Visit the CTP Challenge website to calculate your score. You’ll receive an analysis of your score as well as tips and industry news on combating HAIs in your hospital.

ctpchallenge.com/results